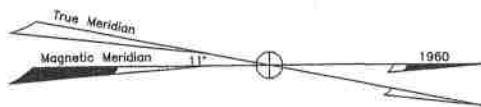


REVISIONS		
DATE	NAME	N.J. LIC. NO.
12-31-87		
8-30-89	HARRY J. WOODS	20384
7-11-89	EDWARD LANE	21197
4-5-01	PETER R. AVAKIAN P.E. & L.S.	28142
DEC. 2003	PETER R. AVAKIAN P.E. & L.S.	28142
OCT. 2005	PETER R. AVAKIAN P.E. & L.S.	28142
FEB. 2009	PETER R. AVAKIAN P.E. & L.S.	28142
FEB. 2014	PETER R. AVAKIAN P.E. & L.S.	28142
JAN. 2017	PETER R. AVAKIAN P.E. & L.S.	28142

TOWNSHIP OF HOWELL
MONMOUTH COUNTY

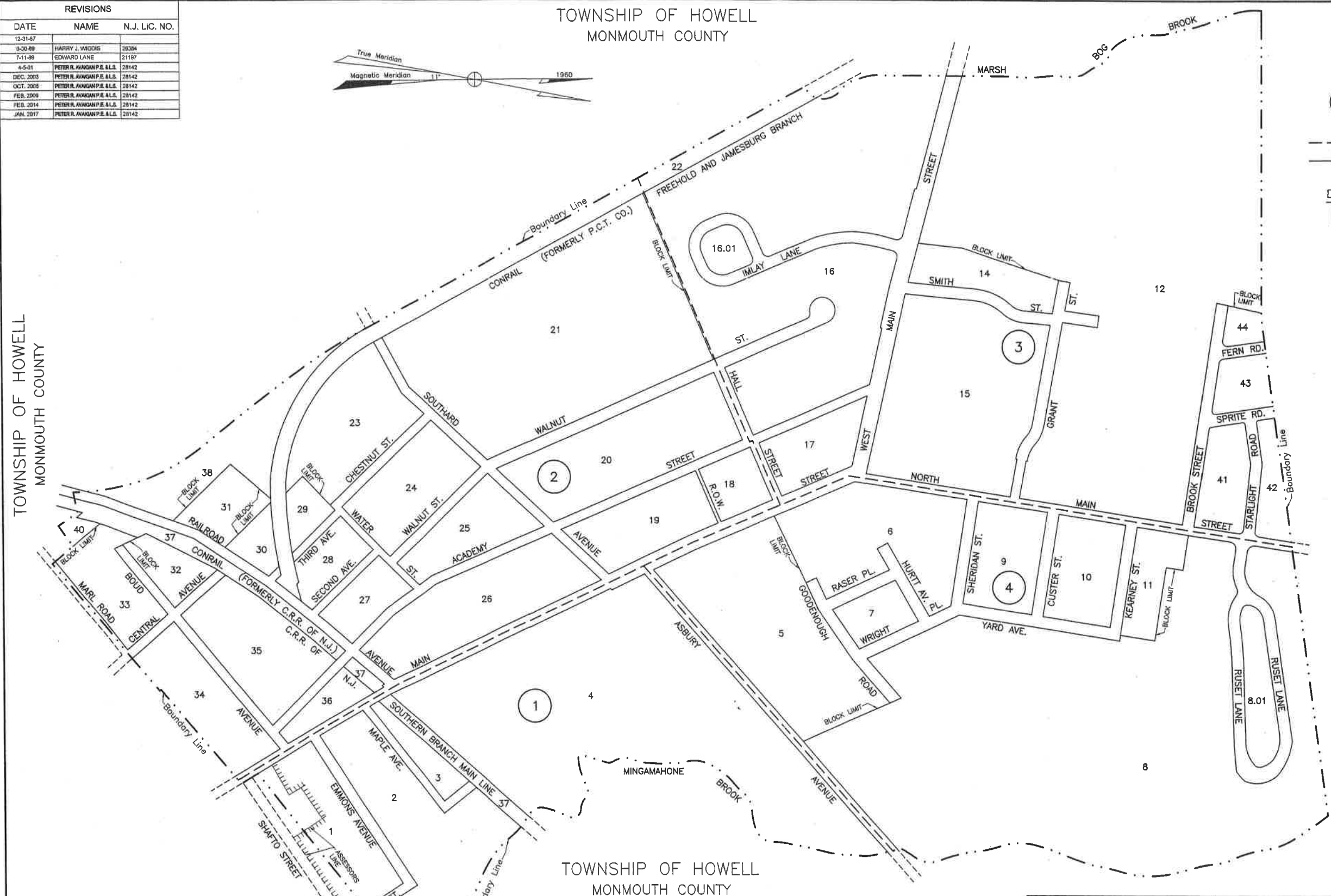


LEGEND
KEY SHEET

- 2 DETAIL SHEET NUMBER
 - 9 BLOCK NUMBER
 - SHEET LIMIT
 - BLOCK LIMIT
- DETAIL SHEETS
- 21 BLOCK NUMBER
 - 5 LOT NUMBER

TOWNSHIP OF HOWELL
MONMOUTH COUNTY

TOWNSHIP OF HOWELL
MONMOUTH COUNTY



TOWNSHIP OF HOWELL
MONMOUTH COUNTY

THIS SHEET IS A SCANNED COPY OF THE TAX MAP ORIGINALLY PREPARED BY CLAUDE W. BIRDSALL, P.E. & L.S. DATED AUGUST 1960. THE ORIGINAL APPROVED MAP IS ON FILE IN THE OFFICE OF THE ENGINEER, LEON S. AVAKIAN, INC., NEPTUNE, NJ.

THE AREAS, BOUNDARIES AND DIMENSIONS SHOWN ON THIS TAX MAP ARE DERIVED FROM GROUND SURVEYS, AERIAL SURVEYS, AND RECORDED PLANS, MAPS, DEEDS, WILLS AND ARE TO BE USED FOR ASSESSMENT PURPOSES ONLY.

THIS TAX MAP SUPERSEDES THE TAX MAP APPROVED DECEMBER 2003.

I HEREBY CERTIFY THAT THIS MAP HAS BEEN REVISED UNDER MY IMMEDIATE SUPERVISION, AND COMPLIES WITH THE LAWS OF THE STATE OF NEW JERSEY

Peter R. Avakian, PLS
PETER R. AVAKIAN, P.L.S. N.J. LIC. NO. 28142

APPROVED BY NJ DEPARTMENT OF THE TREASURY

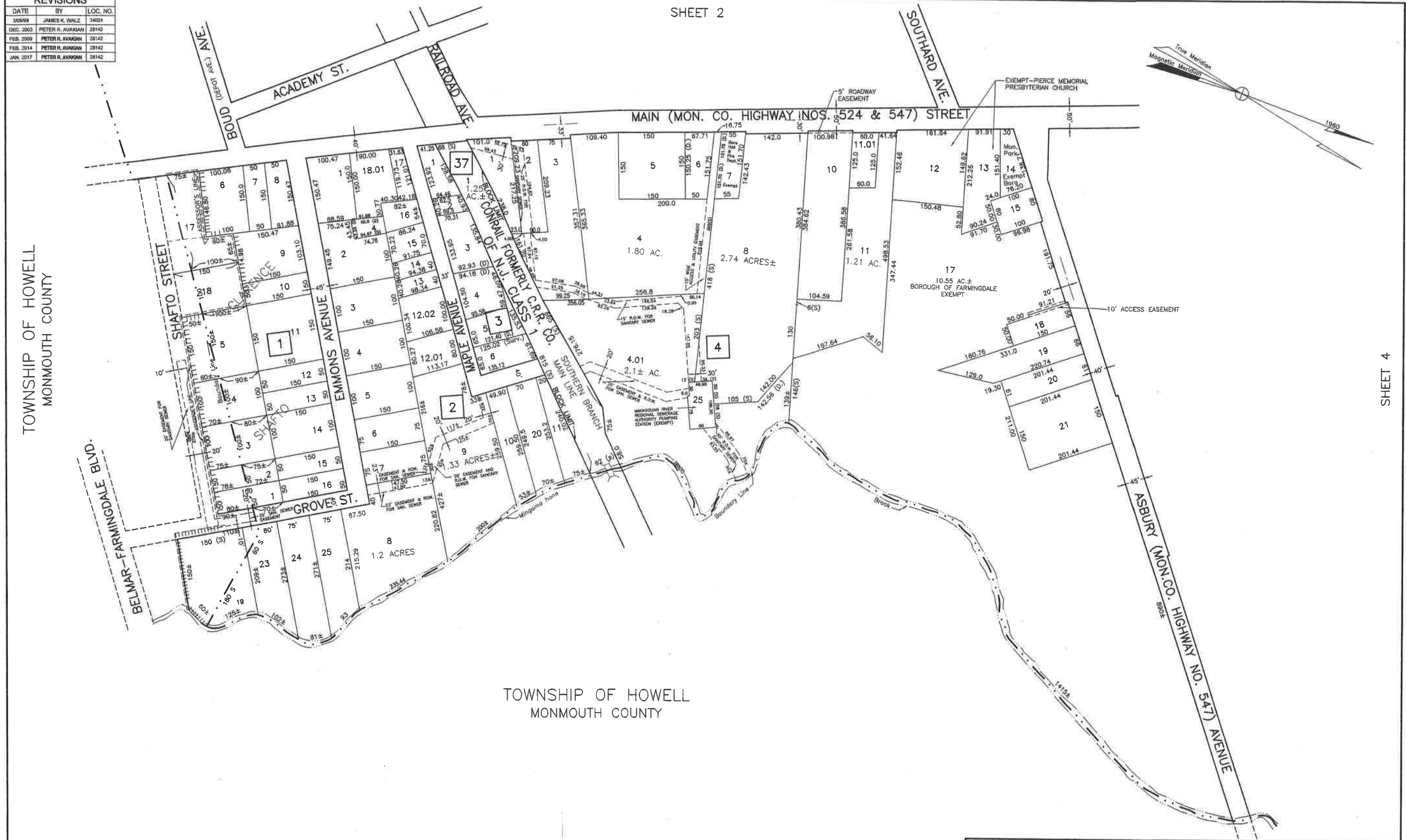
C. E. BARNES
STATE SUPERVISOR

DATE: SEPTEMBER 27, 1960
SERIAL NO. 293

TAX MAP
BOROUGH OF FARMINGDALE
MONMOUTH COUNTY, NEW JERSEY
SCALE: 1" = 200'
AUGUST 1960
CLAUDE W. BIRDSALL, P.E. & L.S.

TO SHOW CONDITIONS AS OF FEBRUARY 2014

REVISIONS		
DATE	BY	LOC. NO.
JAN. 1969	JAMES K. WALZ	34024
DEC. 2003	PETER H. AVAKIAN	28142
FEB. 2009	PETER H. AVAKIAN	28142
FEB. 2014	PETER H. AVAKIAN	28142
JAN. 2017	PETER H. AVAKIAN	28142



TOWNSHIP OF HOWELL
MONMOUTH COUNTY

TOWNSHIP OF HOWELL
MONMOUTH COUNTY

SHEET 4

THIS SHEET IS A SCANNED COPY OF THE TAX MAP
 ORIGINALLY PREPARED BY CLAUDE W. BIRDSALL, P.E. & L.S.
 DATED AUGUST 1960. THE ORIGINAL APPROVED
 MAP IS ON FILE IN THE OFFICE OF THE ENGINEER,
 LEON S. AVAKIAN, INC., NEPTUNE, NJ.

APPROVED BY NJ DEPARTMENT
 OF THE TREASURY

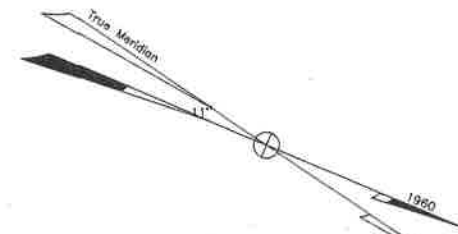
C. E. BARNES
 STATE SUPERVISOR

DATE: SEPTEMBER 27, 1960
 SERIAL NO. 293

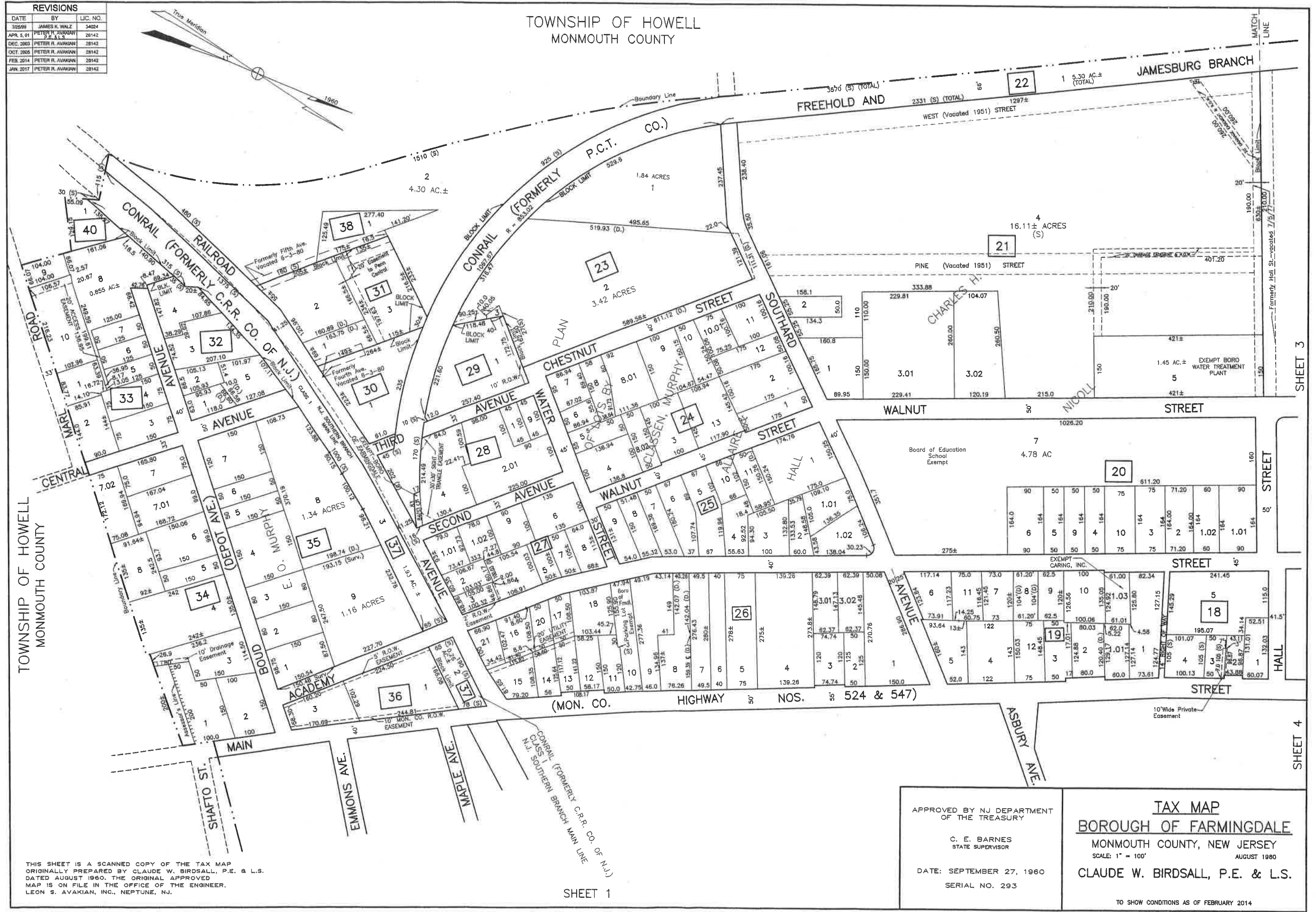
TAX MAP
BOROUGH OF FARMINGDALE
 MONMOUTH COUNTY, NEW JERSEY
 SCALE: 1" = 100' AUGUST 1960
 CLAUDE W. BIRDSALL, P.E. & L.S.

TO SHOW CONDITIONS AS OF FEBRUARY 2014

REVISIONS		
DATE	BY	LIC. NO.
3/25/99	JAMES H. WALZ	34024
APR. 5, 01	PETER H. AVAKIAN P.E. & L.S.	28142
DEC. 2003	PETER H. AVAKIAN	28142
OCT. 2005	PETER H. AVAKIAN	28142
FEB. 2014	PETER H. AVAKIAN	28142
JAN. 2017	PETER H. AVAKIAN	28142



TOWNSHIP OF HOWELL
MONMOUTH COUNTY



THIS SHEET IS A SCANNED COPY OF THE TAX MAP ORIGINALLY PREPARED BY CLAUDE W. BIRDSALL, P.E. & L.S. DATED AUGUST 1960. THE ORIGINAL APPROVED MAP IS ON FILE IN THE OFFICE OF THE ENGINEER, LEON S. AVAKIAN, INC., NEPTUNE, NJ.

SHEET 1

APPROVED BY NJ DEPARTMENT OF THE TREASURY
C. E. BARNES
STATE SUPERVISOR
DATE: SEPTEMBER 27, 1960
SERIAL NO. 293

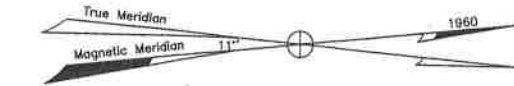
TAX MAP
BOROUGH OF FARMINGDALE
MONMOUTH COUNTY, NEW JERSEY
SCALE: 1" = 100'
AUGUST 1960
CLAUDE W. BIRDSALL, P.E. & L.S.
TO SHOW CONDITIONS AS OF FEBRUARY 2014

TAX MAP
BOROUGH OF FARMINGDALE
 MONMOUTH COUNTY, NEW JERSEY
 SCALE: 1" = 100'
 AUGUST 1960
 CLAUDE W. BIRDSALL, P.E. & L.S.

APPROVED BY NJ DEPARTMENT
 OF THE TREASURY
 C. E. BARNES
 STATE SUPERVISOR
 DATE: SEPTEMBER 27, 1960
 SERIAL NO. 293

REVISIONS		
DATE	BY	LIC. NO.
3/17/99	JAMES K. WALZ	3424
DEC. 2003	PETER R. AVAKIAN	28142
FEB. 2008	PETER R. AVAKIAN	28142
FEB. 2014	PETER R. AVAKIAN	28142
JUN. 2017	PETER R. AVAKIAN	28142

TOWNSHIP OF HOWELL
 MONMOUTH COUNTY



SHEET 2

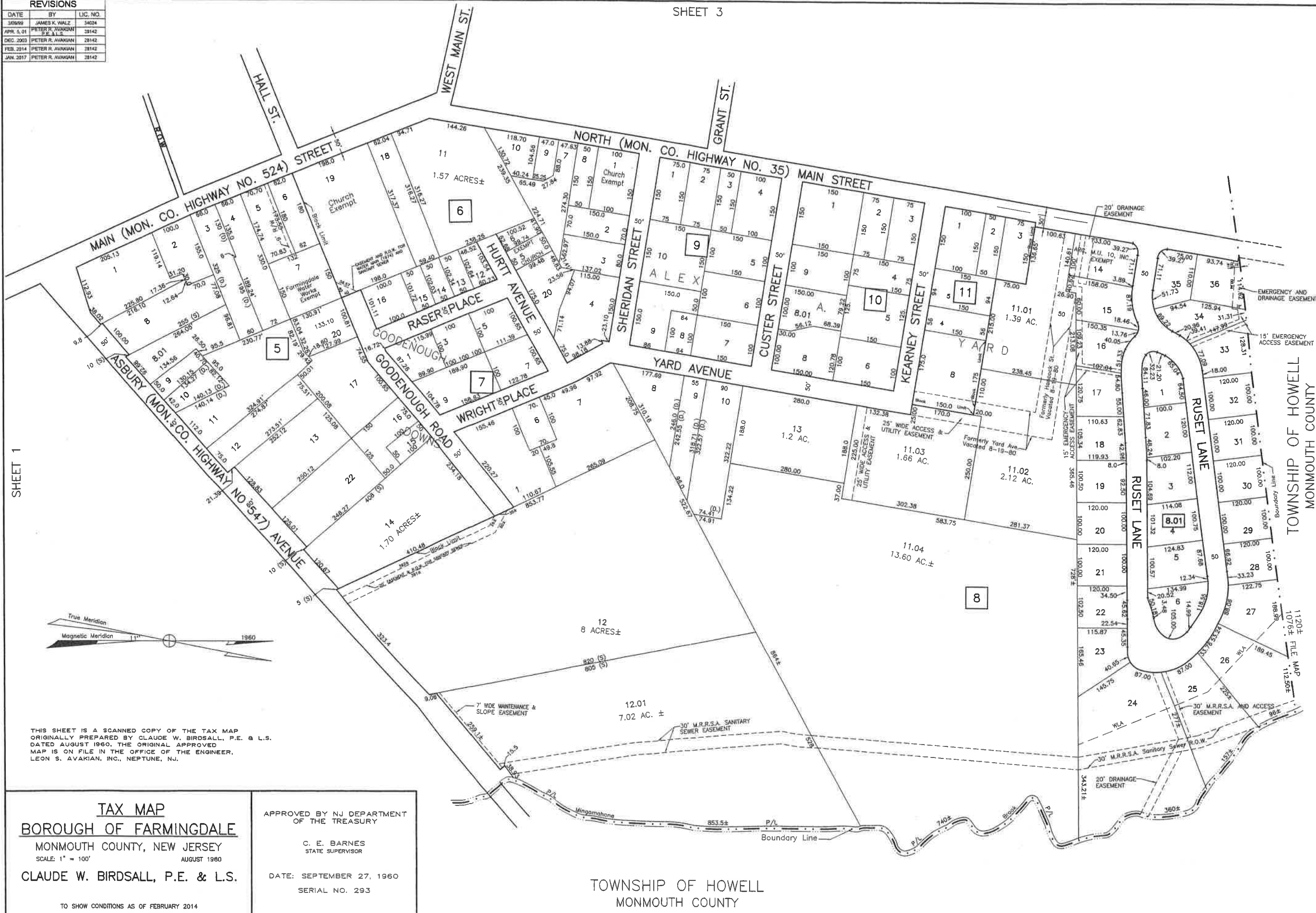
SHEET 4

TOWNSHIP OF HOWELL
 MONMOUTH COUNTY

THIS SHEET IS A SCANNED COPY OF THE TAX MAP
 ORIGINALLY PREPARED BY CLAUDE W. BIRDSALL, P.E. & L.S.
 DATED AUGUST 1960. THE ORIGINAL APPROVED
 MAP IS ON FILE IN THE OFFICE OF THE ENGINEER,
 LEON S. AVAKIAN, INC., NEPTUNE, NJ.

DATE	BY	LIC. NO.
30869	JAMES K. WALZ	34024
APR. 5, 01	PETER R. AVAKIAN	28142
DEC. 2003	PETER R. AVAKIAN	28142
FEB. 2014	PETER R. AVAKIAN	28142
JAN. 2017	PETER R. AVAKIAN	28142

SHEET 3



THIS SHEET IS A SCANNED COPY OF THE TAX MAP ORIGINALLY PREPARED BY CLAUDE W. BIRDSALL, P.E. & L.S. DATED AUGUST 1960. THE ORIGINAL APPROVED MAP IS ON FILE IN THE OFFICE OF THE ENGINEER, LEON S. AVAKIAN, INC., NEPTUNE, NJ.

TAX MAP
BOROUGH OF FARMINGDALE
 MONMOUTH COUNTY, NEW JERSEY
 SCALE: 1" = 100'
 AUGUST 1980
CLAUDE W. BIRDSALL, P.E. & L.S.
 TO SHOW CONDITIONS AS OF FEBRUARY 2014

APPROVED BY NJ DEPARTMENT OF THE TREASURY
 C. E. BARNES
 STATE SUPERVISOR
 DATE: SEPTEMBER 27, 1960
 SERIAL NO. 293

TOWNSHIP OF HOWELL
 MONMOUTH COUNTY